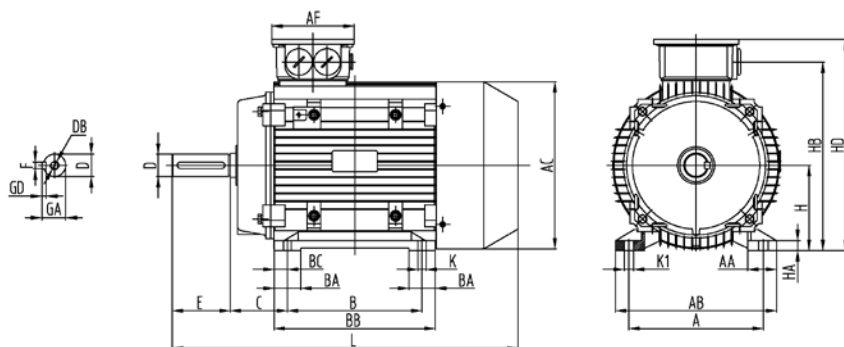


Dimensions IE3

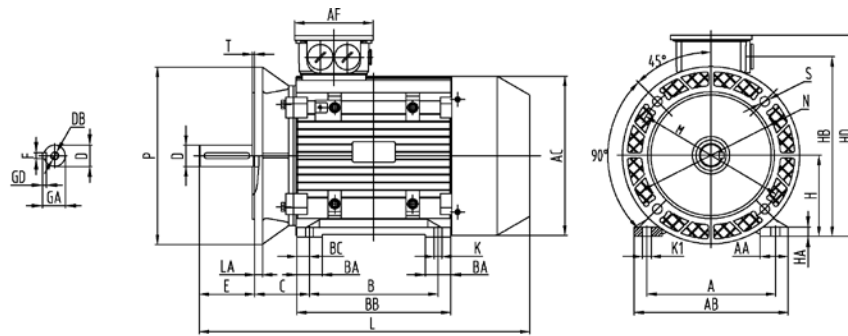
Mounting arrangement IM 1001 (B3)



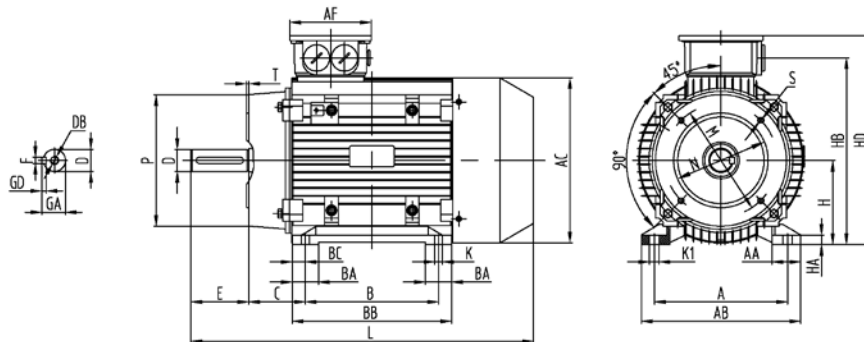
Type	Frame size	No. of poles	Dimensions according to IEC [mm]													
			H	A	B	C	AB	BB	BC	HD	AC	HB	HA	K	K1	L
			Dimensions according to DIN [mm]													
IE3			h	b	a	w1	f	e		m1	g	v	c	s		k
DOR80M1, M2	80	2...6	80	125	100	50	160	125	12,5	209	158	182	11	9	16	277
DOR90S	90S	2...6	90	140	100	56	175	130	12,5	228	177	201	13	8,8	12,8	312
DOR90L	90L	2...6	90	140	125	56	175	155	12,5	228	177	201	13	8,8	12,8	337
DOR100L, L1, L2	100L	2...6	100	160	140	63	200	160	20	258	200	225	14	10	16	380
DOR112M	112M	2...6	112	190	140	70	226	180	20	280	220	249	14	12	16	400
DOR132S, S1, S2	132S	2...6	132	216	140	89	255	190	25	319	261	288	16	12	16	460
DOR132M, M1, M2	132M	2...6	132	216	178	89	255	228	25	319	261	288	16	12	16	500
DOR160M, M1, M2	160M	2...6	160	254	210	108	314	261	25,5	385	313	350	20	15	19	625
DOR160L	160L	2...6	160	254	254	108	314	305	25,5	385	313	350	20	15	19	669

Type	Frame size	No. of poles	Dimensions according to IEC [mm]							
			AF	AA	D	E	F	GD	GA	DB
			Dimensions according to DIN [mm]							
IE3			n	d	l	u		t	d6/d7	
DOR80M1, M2	80	2...6	105	35	19	40	6	6	21,5	M6
DOR90S	90S	2...6	105	35	24	50	8	7	27	M8
DOR90L	90L	2...6	105	35	24	50	8	7	27	M8
DOR100L, L1, L2	100L	2...6	112	45	28	60	8	7	31	M10
DOR112M	112M	2...6	112	43	28	60	8	7	31	M10
DOR132S, S1, S2	132S	2...6	112	44	38	80	10	8	41	M12
DOR132M, M1, M2	132M	2...6	112	44	38	80	10	8	41	M12
DOR160M, M1, M2	160M	2...6	143	60	42	110	12	8	45	M16
DOR160L	160L	2...6	143	60	42	110	12	8	45	M16

Mounting arrangement IM 2001 (B35), IM 3001 (B5) without feet



Mounting arrangement IM (B34), IM 3601 (B14) without feet



Type	Frame size	No. of poles	Flange B5						Small flange B14					Big flange B14				
			Dimensions according to IEC [mm]															
			M	N	P	T	LA	S ¹⁾	M	N	P	T	S	M	N	P	T	S
			Dimensions according to DIN [mm]															
IE3			e1	b1	a1	f1	c1	s1 ¹⁾	e1	b1	a1	f1	s1	e1	b1	a1	f1	s1
DOR80M1, M2	80	2..6	165	130	200	3,5	12	4 x M10	100	80	120	3	4 x M6	130	110	160	3,5	4 x M8
DOR90S	90S	2..6	165	130	200	3,5	12	4 x M10	115	95	140	3	4 x M8	130	110	160	3,5	4 x M8
DOR90L	90L	2..6	165	130	200	3,5	12	4 x M10	115	95	140	3	4 x M8	130	110	160	3,5	4 x M8
DOR100L, L1, L2	100L	2..6	215	180	250	4	13	4 x M12	130	110	160	3,5	4 x M8	165	130	200	3,5	4 x M10
DOR112M	112M	2..6	215	180	250	4	14	4 x M12	130	110	160	3,5	4 x M8	165	130	200	3,5	4 x M10
DOR132S, S1, S2	132S	2..6	265	230	300	4	14	4 x M12	165	130	200	3,5	4 x M10	215	180	250	4	4 x M12
DOR132M, M1, M2	132M	2..6	265	230	300	4	14	4 x M12	165	130	200	3,5	4 x M10	215	180	250	4	4 x M12
DOR160M, M1, M2	160M	2..6	300	250	350	5	15	4 x M16	-	-	-	-	-	-	-	-	-	-
DOR160L	160L	2..6	300	250	350	5	15	4 x M16	-	-	-	-	-	-	-	-	-	-

¹⁾ Through hole, suitable for screws