

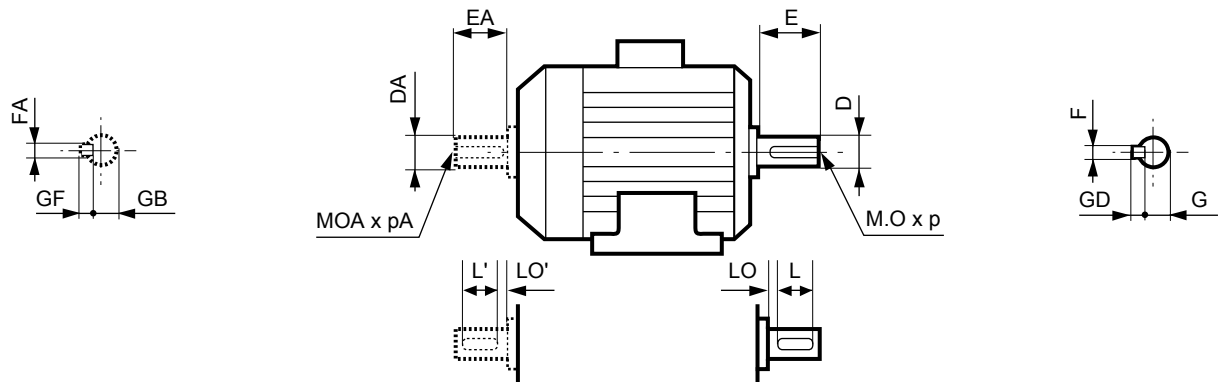
# IMfinity® 3-phase induction motors - IE2 - IE3 - IE4 - Non IE Efficiency

## IP55 Cast iron frame

### Dimensions

### Shaft extensions

Dimensions in millimetres



Type	Main shaft extensions																	
	4 and 6 poles									2 poles								
	F	GD	D	G	E	O	p	L	LO	F	GD	D	G	E	O	p	L	LO
FLSES 80 L/LG	6	6	19j6	15.5	40	M6	16	30	6	6	6	19j6	15.5	40	M6	16	30	6
FLSES 90 L/LU/SL	8	7	24j6	20	50	M8	19	40	6	8	7	24j6	20	50	M8	19	40	6
FLSES 100 L/LG/LR	8	7	28j6	24	60	M10	22	50	6	8	7	28j6	24	60	M10	22	50	6
FLSES 112 MG/MU	8	7	28j6	24	60	M10	22	50	6	8	7	28j6	24	60	M10	22	50	6
FLSES 132 M/MR/MU/SM	10	8	38k6	33	80	M12	28	63	10	10	8	38k6	33	80	M12	28	63	10
FLSES 160 L/LUR/M/MU	12	8	42k6	37	110	M16	36	90	20	12	8	42k6	37	110	M16	36	90	20
FLSES 180 L/LUR/M/MT/MUR	14	9	48k6	42.5	110	M16	36	90	20	14	9	48k6	42.5	110	M16	36	90	20
FLSES 200 LU	16	10	55m6	49	110	M20	42	90	20	16	10	55m6	49	110	M20	42	90	20
FLSES 225 MR	-	-	-	-	-	-	-	-	-	16	10	55m6	49	110	M20	42	90	20
FLSES 225 M/S/SR	18	11	60m6	53	140	M20	42	125	15	-	-	-	-	-	-	-	-	-
FLSES 250 M	18	11	65m6	58	140	M20	42	125	15	18	11	60m6	53	140	M20	42	125	15
FLSES 250 MR	18	11	65m6	58	140	M20	42	125	15	-	-	-	-	-	-	-	-	-
FLSES 280 M/S	20	12	75m6	67.5	140	M20	42	125	15	18	11	65m6	58	140	M20	42	125	15
FLSES 315 LA/LB	25	14	90m6	81	170	M24	50	140	30	20	12	70m6	62.5	140	M20	42	125	15
FLSES 315 M/S	22	14	80m6	71	170	M20	42	140	30	18	11	65m6	58	140	M20	42	125	15
FLSES 355 LA/LAL/LB/LC/LD/LKB	28	16	100m6	90	210	M24	50	180	30	22	14	80m6	71	170	M20	42	140	30
FLSES 355 LKA/LKC	28	16	100m6	90	210	M24	50	180	30	-	-	-	-	-	-	-	-	-
FLSES 400 LB	28	16	110m6	100	210	M24	50	180	30	22	14	80m6	71	170	M20	42	140	30
FLSES 450 LA/LB/LC/LD	32	18	120m6	109	210	M24	50	180	30	-	-	-	-	-	-	-	-	-

Type	Secondary shaft extensions																	
	4 and 6 poles									2 poles								
	FA	GF	DA	GB	EA	OA	pA	L'	LO'	FA	GF	DA	GB	EA	OA	pA	L'	LO'
FLSES 80 L	5	5	14j6	11	30	M5	15	25	3.5	5	5	14j6	11	30	M5	15	25	3.5
FLSES 80 LG	6	6	19j6	15.5	40	M6	16	30	6	6	6	19j6	15.5	40	M6	16	30	6
FLSES 90 L/LU/SL	6	6	19j6	15.5	40	M6	16	30	6	6	6	19j6	15.5	40	M6	16	30	6
FLSES 100 L/LG/LR	8	7	24j6	20	50	M8	19	40	6	8	7	24j6	20	50	M8	19	40	6
FLSES 112 MG/MU	8	7	24j6	20	50	M8	19	40	6	8	7	24j6	20	50	M8	19	40	6
FLSES 132 M/MR/MU/SM	8	7	28k6	24	60	M10	22	50	6	8	7	28k6	24	60	M10	22	50	6
FLSES 160 L/M/MU	12	8	42k6	37	110	M16	36	100	6	12	8	42k6	37	110	M16	36	100	6
FLSES 160LUR	12	8	42k6	37	110	M16	36	90	20	12	8	42k6	37	110	M16	36	90	20
FLSES 180 MT/MUR	14	9	48k6	42.5	110	M16	36	90	20	14	9	48k6	42.5	110	M16	36	90	20
FLSES 180 L/LUR/M	14	9	48k6	42.5	110	M16	36	98	12	14	9	48k6	42.5	110	M16	36	98	12
FLSES 200 LU	16	10	55m6	49	110	M20	42	90	20	16	10	55m6	49	110	M20	42	90	20
FLSES 225 M/S/SR	18	11	60m6	53	140	M20	42	125	15	16	10	55m6	49	110	M20	42	90	20
FLSES 225 MR	-	-	-	-	-	-	-	-	-	16	10	55m6	49	110	M20	42	90	20
FLSES 250 M/MR	18	11	60m6	53	140	M20	42	125	15	18	11	60m6	53	140	M20	42	125	15
FLSES 280 M/S	20	12	60m6	53	140	M20	42	125	15	18	11	60m6	53	140	M20	42	125	15
FLSES 315 LA/LB	25	14	90m6	81	170	M24	50	140	30	20	12	70m6	63.5	140	M20	42	125	15
FLSES 315 M/S	22	14	80m6	71	170	M20	42	140	30	18	11	65m6	58	140	M20	42	125	15
FLSES 355 LA/LAL/LB/LC/LD/LKA/LKB/LKC	28	16	100m6	90	210	M24	50	180	30	22	14	80m6	71	170	M20	42	140	30
FLSES 400 LB	28	16	110m6	100	210	M24	50	180	30	22	14	80m6	71	170	M20	42	140	30
FLSES 450 LA/LB/LC/LD	32	18	120m6	109	210	M24	50	180	30	-	-	-	-	-	-	-	-	-

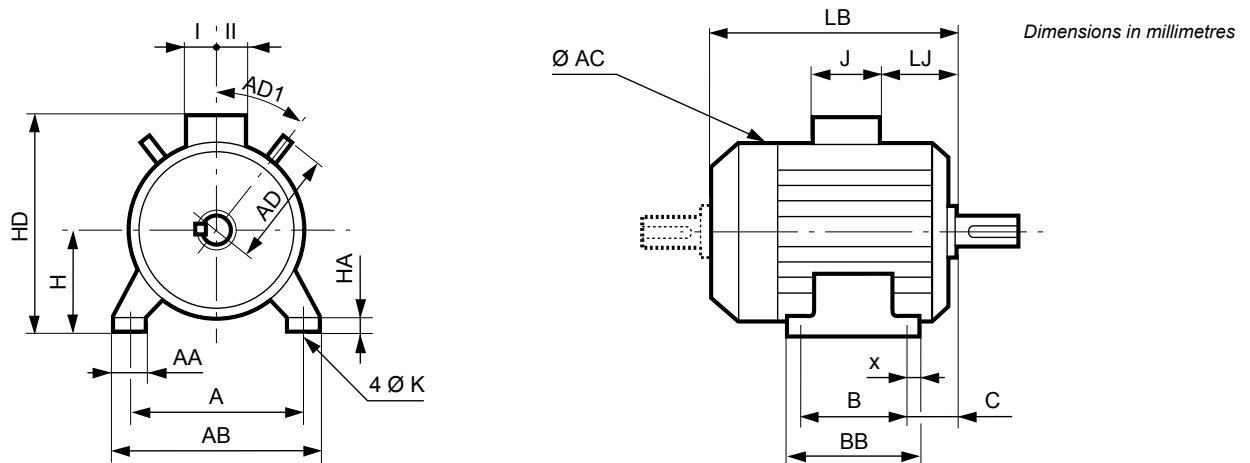
IP55 CAST IRON MOTORS

# IMfinity® 3-phase induction motors - IE2 - IE3 - IE4 - Non IE Efficiency

IP55 Cast iron frame

Dimensions

Foot mounted IM 1001 (IM B3)



Type	Main dimensions																		
	A	AB	B	BB	C	x	AA	K	HA	H	AC*	HD	LB	LJ	J	I	II	AD	AD1
FLSES 80L	125	157	100	130	50	18	34	10	10	80	170	228	212	7	136	68	68	-	-
FLSES 80LG	125	170	100	138	50	22	39	10	10	80	203	238	243	8	136	68	68	135	41
FLSES 90L	140	170	125	162	56	28	33	10	10	90	203	248	239	8.5	136	68	68	135	41
FLSES 90LU	140	170	125	162	56	28	33	10	10	90	203	248	266	8.5	136	68	68	135	41
FLSES 90SL	140	170	125	162	56	28	33	10	10	90	203	248	239	8.5	136	68	68	135	41
FLSES 100L	160	196	140	185	63	29	40	12	13	100	204	258	300	8	136	68	68	135	41
FLSES 100LG	160	196	140	168	63	13	40	12	14	100	227	264	299	0.5	136	68	68	130	45
FLSES 100LR	160	196	140	185	63	29	40	12	13	100	204	258	300	8	136	68	68	135	41
FLSES 112MG	190	230	140	186	60	32	48	12	12	112	230	294	299	8	136	68	68	148	41
FLSES 112MU	190	230	140	186	60	32	48	12	12	112	230	294	299	8	136	68	68	148	41
FLSES 132M	216	255	178	240	89	50	63	12	16	132	270	335	385	22	136	68	68	165	37.5
FLSES 132MR	216	255	178	240	89	50	63	12	16	132	270	335	447	22	136	68	68	165	37.5
FLSES 132MU	216	255	178	240	89	50	63	12	16	132	270	335	447	22	136	68	68	165	37.5
FLSES 132SM	216	255	140	240	89	50	63	12	16	132	270	335	385	22	136	68	68	165	37.5
FLSES 160L	254	294	254	294	108	20	65	14.5	20	160	315	436	495	30	246	126	148	179	45
FLSES 160LUR	254	294	254	294	108	20	65	14.5	20	160	315	436	510	30	246	126	148	179	45
FLSES 160M	254	294	210	294	108	20	65	14.5	20	160	315	436	495	30	246	126	148	179	45
FLSES 160MU	254	294	210	294	108	20	65	14.5	20	160	315	436	510	30	246	126	148	179	45
FLSES 180L	279	330	279	330	121	28	70	14.5	28	180	353	477	552	42	246	126	148	190	45
FLSES 180M	279	330	279	330	121	28	70	14.5	28	180	353	477	593	42	246	126	148	190	45
FLSES 180MT	279	330	241	330	121	28	70	14.5	28	180	353	477	552	42	246	126	148	190	45
FLSES 180LUR	279	330	241	330	115	28	70	14.5	28	180	353	477	537	36	246	126	148	190	45
FLSES 180MUR	279	324	241	290	121	25	80	14.5	25	180	315	456	545	30	246	126	148	179	45
FLSES 200LU	318	374	305	360	135	28	60	18.5	17	200	396	528	674	51	246	126	148	243	45
FLSES 225M	356	426	311	375	149	32	80	18.5	27	225	487	652	779	69.5	352	175	212	276	45
FLSES 225MR	356	426	311	375	144.5	32	70	18.5	17	225	398	553	674	51	246	126	148	243	45
FLSES 225S	356	426	286	375	149	32	80	18.5	27	225	487	652	779	69.5	352	175	212	276	45
FLSES 225SR	356	426	286	375	144.5	32	70	18.5	17	225	398	553	674	51	246	126	148	243	45
FLSES 250M	406	476	349	413	168	32	80	24	27	250	487	677	779	69.5	352	175	212	276	45
FLSES 250MR	406	476	349	413	168	32	80	24	27	250	487	677	859	69.5	352	175	212	276	45
FLSES 280M	457	527	419	486	190	33	80	24	30.5	280	475	719	959	69.5	352	175	212	305	45
FLSES 280S	457	527	368	486	190	33	80	24	30.5	280	475	719	959	69.5	352	175	212	305	45
FLSES 315LA	508	600	508	610	216	58	100	28	35	315	600	847	1177	101	452	219	269	343	45
FLSES 315LB	508	600	508	610	216	58	100	28	35	315	600	847	1177	101	452	219	269	343	45
FLSES 315M	508	600	457	610	216	58	100	28	35	315	600	847	1177	101	452	219	269	343	45
FLSES 315S	508	600	406	610	216	58	100	28	35	315	600	847	1177	101	452	219	269	343	45
FLSES 355LA	610	710	630	756	254	76	100	28	35	355	688	925	1303	121	452	219	269	-	-
FLSES 355LAL	610	710	630	756	254	76	100	28	35	355	688	925	1303	121	452	219	269	-	-
FLSES 355LB	610	710	630	756	254	76	100	28	35	355	688	925	1303	121	452	219	269	-	-
FLSES 355LC	610	710	630	756	254	76	100	28	35	355	688	925	1303	121	452	219	269	-	-
FLSES 355LD	610	710	630	756	254	76	100	28	35	355	688	925	1303	121	452	219	269	-	-
FLSES 355LKA	610	750	630	815	254	40	128	27	45	355	787	1117	1702	52	700	224	396	-	-
FLSES 355LKB	610	750	630	815	254	40	128	27	45	355	787	1117	1702	52	700	224	396	-	-
FLSES 355LKC	610	750	630	815	254	40	128	27	45	355	787	1117	1702	52	700	224	396	-	-
FLSES 400LB	686	800	710	815	280	65	128	35	45	400	787	1162	1702	52	700	224	396	-	-
FLSES 450LA	750	890	800	950	315	94	140	35	45	450	877	1260	1738	68	700	224	396	-	-
FLSES 450LB	750	890	800	950	315	94	140	35	45	450	877	1260	1738	68	700	224	396	-	-
FLSES 450LC	750	890	1000	1170	315	94	140	35	45	450	877	1260	2088	68	700	224	396	-	-
FLSES 450LD	750	890	1000	1170	315	94	140	35	45	450	877	1260	2088	68	700	224	396	-	-

\* AC: housing diameter without lifting rings

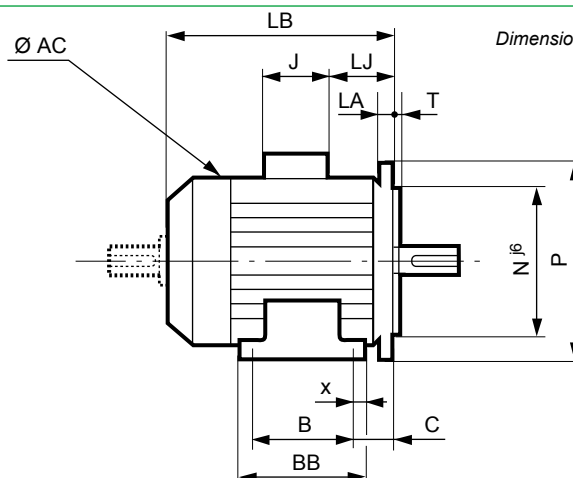
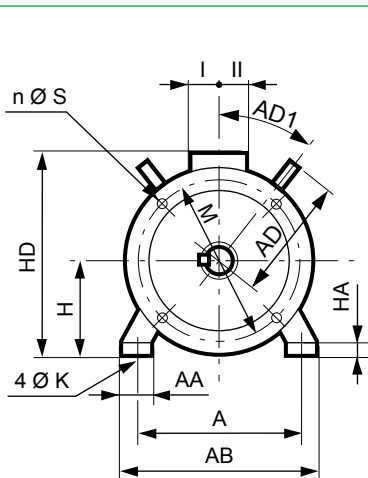
IP55 CAST IRON MOTORS

# IMfinity® 3-phase induction motors - IE2 - IE3 - IE4 - Non IE Efficiency

## IP55 Cast iron frame

### Dimensions

### Foot and flange mounted IM 2001 ( IM B35)



Dimensions in millimetres

IP55 CAST IRON MOTORS

Type	Main dimensions																Symb			
	A	AB	B	BB	C	x	AA	K	HA	H	AC*	HD	LB	LJ	J	I		II	AD	AD1
FLSES 80L	125	157	100	130	50	18	34	10	10	80	170	228	212	7	136	68	68	-	-	FF165
FLSES 80LG	125	170	100	138	70	22	39	10	10	80	203	238	263	28	136	68	68	135	41	FF165
FLSES 90L	140	170	125	162	76	28	33	10	10	90	203	248	259	28.5	136	68	68	135	41	FF165
FLSES 90LU	140	170	125	162	76	28	33	10	10	90	203	248	259	28.5	136	68	68	135	41	FF165
FLSES 90SL	140	170	125	162	76	28	33	10	10	90	203	248	259	28.5	136	68	68	135	41	FF165
FLSES 100L	160	196	140	185	63	29	40	12	13	100	204	258	300	8	136	68	68	135	41	FF215
FLSES 100LG	160	196	140	185	73	13	40	12	14	100	227	264	309	9.5	136	68	68	130	45	FF215
FLSES 100LR	160	196	140	185	63	29	40	12	13	100	204	258	300	8	136	68	68	135	41	FF215
FLSES 112MG	190	230	140	186	70	32	48	12	12	112	230	294	309	18	136	68	68	148	41	FF215
FLSES 112MU	190	230	140	186	70	32	48	12	12	112	230	294	309	18	136	68	68	148	41	FF215
FLSES 132M	216	255	178	240	89	50	63	12	16	132	270	335	385	22	136	68	68	165	37.5	FF265
FLSES 132MR	216	255	178	240	89	50	63	12	16	132	270	335	447	22	136	68	68	165	37.5	FF265
FLSES 132MU	216	255	178	240	89	50	63	12	16	132	270	335	447	22	136	68	68	165	37.5	FF265
FLSES 132SM	216	255	140	240	89	50	63	12	16	132	270	335	385	22	136	68	68	165	37.5	FF265
FLSES 160L	254	294	254	294	108	20	65	14.5	20	160	315	436	495	30	246	126	148	179	45	FF300
FLSES 160LUR	254	294	254	294	108	20	65	14.5	20	160	315	436	510	30	246	126	148	179	45	FF300
FLSES 160M	254	294	210	294	108	20	65	14.5	20	160	315	436	495	30	246	126	148	179	45	FF300
FLSES 160MU	254	294	210	294	108	20	65	14.5	20	160	315	436	510	30	246	126	148	179	45	FF300
FLSES 180L	279	330	279	330	121	28	70	14.5	28	180	353	477	552	42	246	126	148	190	45	FF300
FLSES 180M	279	330	241	330	121	28	70	14.5	28	180	353	477	552	42	246	126	148	190	45	FF300
FLSES 180MT	279	330	241	330	115	28	70	14.5	28	180	353	477	537	36	246	126	148	190	45	FF300
FLSES 180LUR	279	330	279	330	121	28	70	14.5	28	180	353	477	593	42	246	126	148	190	45	FF300
FLSES 180MUR	279	324	241	290	121	25	80	14.5	25	180	315	456	545	30	246	126	148	179	45	FF300
FLSES 200LU	318	374	305	360	135	28	60	18.5	17	200	396	528	674	51	246	126	148	243	45	FF350
FLSES 225M	356	426	311	375	149	32	80	18.5	27	225	487	652	779	69.5	352	175	212	276	45	FF400
FLSES 225MR	356	426	311	375	144.5	32	70	18.5	17	225	398	553	674	51	246	126	148	243	45	FF400
FLSES 225S	356	426	286	375	149	32	80	18.5	27	225	487	652	779	69.5	352	175	212	276	45	FF400
FLSES 225SR	356	426	286	375	144.5	32	70	18.5	17	225	398	553	674	51	246	126	148	243	45	FF400
FLSES 250M	406	476	349	413	168	32	80	24	27	250	487	677	779	69.5	352	175	212	276	45	FF500
FLSES 250MR	406	476	349	413	168	32	80	24	27	250	487	677	859	69.5	352	175	212	276	45	FF500
FLSES 280M	457	527	419	486	190	33	80	24	30.5	280	475	719	959	69.5	352	175	212	305	45	FF500
FLSES 280S	457	527	368	486	190	33	80	24	30.5	280	475	719	959	69.5	352	175	212	305	45	FF500
FLSES 315LA	508	600	508	610	216	58	100	28	35	315	600	847	1177	101	452	219	269	343	45	FF600
FLSES 315LB	508	600	508	610	216	58	100	28	35	315	600	847	1177	101	452	219	269	343	45	FF600
FLSES 315M	508	600	457	610	216	58	100	28	35	315	600	847	1177	101	452	219	269	343	45	FF600
FLSES 315S	508	600	406	610	216	58	100	28	35	315	600	847	1177	101	452	219	269	343	45	FF600
FLSES 355LA	610	710	630	756	254	76	100	28	35	355	688	925	1303	121	452	219	269	-	-	FF740
FLSES 355LAL	610	710	630	756	254	76	100	28	35	355	688	925	1303	121	452	219	269	-	-	FF740
FLSES 355LB	610	710	630	756	254	76	100	28	35	355	688	925	1303	121	452	219	269	-	-	FF740
FLSES 355LC	610	710	630	756	254	76	100	28	35	355	688	925	1303	121	452	219	269	-	-	FF740
FLSES 355LD	610	710	630	756	254	76	100	28	35	355	688	925	1303	121	452	219	269	-	-	FF740
FLSES 355LKA	610	750	630	815	254	40	128	27	45	355	787	1117	1702	52	700	224	396	-	-	FF740
FLSES 355LKB	610	750	630	815	254	40	128	27	45	355	787	1117	1702	52	700	224	396	-	-	FF740
FLSES 355LKC	610	750	630	815	254	40	128	27	45	355	787	1117	1702	52	700	224	396	-	-	FF740
FLSES 400LB	686	800	710	815	280	65	128	35	45	400	787	1162	1702	52	700	224	396	-	-	FF940
FLSES 450LA	750	890	800	950	315	94	140	35	45	450	877	1260	1738	68	700	224	396	-	-	FF1080
FLSES 450LB	750	890	800	950	315	94	140	35	45	450	877	1260	1738	68	700	224	396	-	-	FF1080
FLSES 450LC	750	890	1000	1170	315	94	140	35	45	450	877	1260	2088	68	700	224	396	-	-	FF1080
FLSES 450LD	750	890	1000	1170	315	94	140	35	45	450	877	1260	2088	68	700	224	396	-	-	FF1080

\* AC: housing diameter without lifting rings



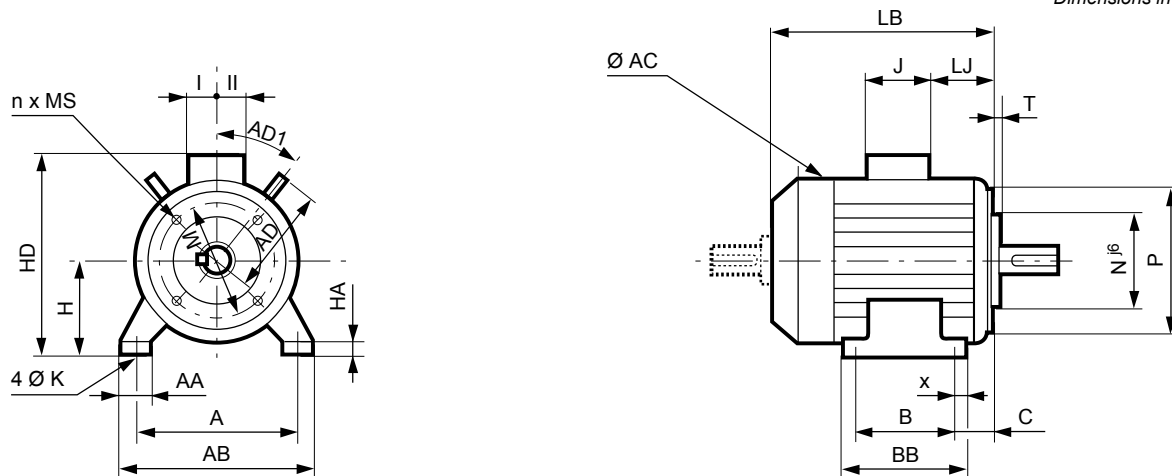
# IMfinity® 3-phase induction motors - IE2 - IE3 - IE4 - Non IE Efficiency

## IP55 Cast iron frame

### Dimensions

### Foot and face mounted IM 2101 ( IM B34)

Dimensions in millimetres



Type	Main dimensions																			
	A	AB	B	BB	C	x	AA	K	HA	H	AC*	HD	LB	LJ	J	I	II	AD	AD1	Symb
FLSES 80L	125	157	100	130	50	18	34	10	10	80	170	228	212	7	136	68	68	-	-	FT100
FLSES 80LG	125	170	100	138	50	22	39	10	10	80	203	238	243	8	136	68	68	135	41	FT100
FLSES 90L	140	170	125	162	56	28	33	10	10	90	203	248	239	8.5	136	68	68	135	41	FT115
FLSES 90LU	140	170	125	162	56	28	33	10	10	90	203	248	266	8.5	136	68	68	135	41	FT115
FLSES 90SL	140	170	125	162	56	28	33	10	10	90	203	248	239	8.5	136	68	68	135	41	FT115
FLSES 100L	160	196	140	185	63	29	40	12	13	100	204	258	300	8	136	68	68	135	41	FT130
FLSES 100LG	160	196	140	168	73	13	40	12	14	100	227	264	309	9.5	136	68	68	130	45	FT130
FLSES 100LR	160	196	140	185	63	29	40	12	13	100	204	258	300	8	136	68	68	135	41	FT130
FLSES 112MG	190	230	140	186	70	32	48	12	12	112	230	294	309	18	136	68	68	148	41	FT130
FLSES 112MU	190	230	140	186	70	32	48	12	12	112	230	294	309	18	136	68	68	148	41	FT130
FLSES 132M	216	255	178	240	89	50	63	12	16	132	270	335	385	22	136	68	68	165	37.5	FT165
FLSES 132MR	216	255	178	240	89	50	63	12	16	132	270	335	447	22	136	68	68	165	37.5	FT165
FLSES 132MU	216	255	178	240	89	50	63	12	16	132	270	335	447	22	136	68	68	165	37.5	FT165
FLSES 132SM	216	255	140	240	89	50	63	12	16	132	270	335	385	22	136	68	68	165	37.5	FT165

\* AC: housing diameter without lifting rings

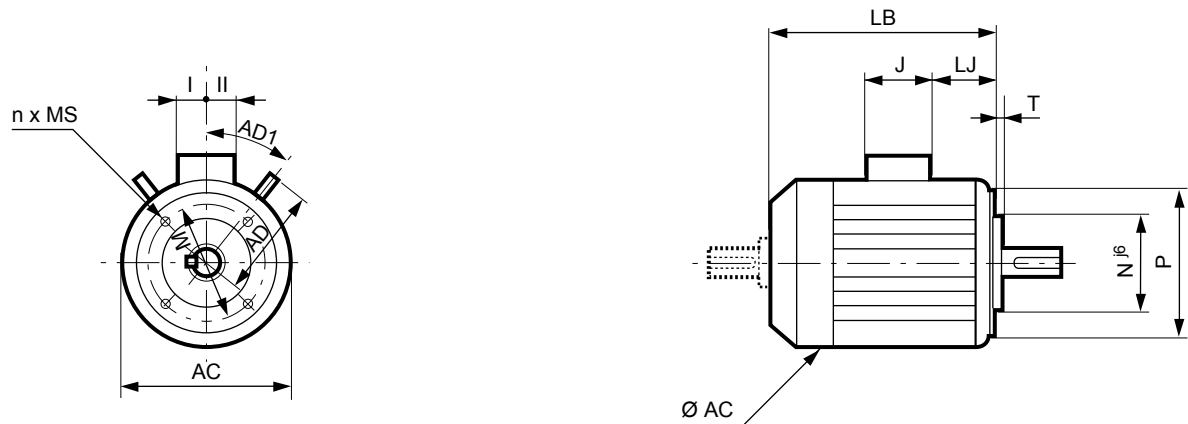
# IMfinity® 3-phase induction motors - IE2 - IE3 - IE4 - Non IE Efficiency

IP55 Cast iron frame

Dimensions

Face mounted IM 3601 (IM B14)

Dimensions in millimetres



Type	Main dimensions								
	AC*	LB	HJ	LJ	J	I	II	AD	AD1
FLSES 80L	170	212	148	7	136	68	68	-	-
FLSES 80LG	203	243	158	8	136	68	68	135	41
FLSES 90L	203	239	158	8.5	136	68	68	135	41
FLSES 90LU	203	266	158	8.5	136	68	68	135	41
FLSES 90SL	203	239	158	8.5	136	68	68	135	41
FLSES 100L	204	300	158	8	136	68	68	135	41
FLSES 100LG	227	309	164	9.5	136	68	68	130	45
FLSES 100LR	204	300	158	8	136	68	68	135	41
FLSES 112MG	230	309	182	18	136	68	68	148	41
FLSES 112MU	230	309	182	18	136	68	68	148	41
FLSES 132M	270	385	203	22	136	68	68	165	37.5
FLSES 132MR	270	447	203	22	136	68	68	165	37.5
FLSES 132MU	270	447	203	22	136	68	68	165	37.5
FLSES 132SM	270	385	203	22	136	68	68	165	37.5

\* AC: housing diameter without lifting rings

IEC symbol	Faceplate dimensions						
	M	N	P	T	n	α°	S
FT100	100	80	120	3	4	45	M6
FT100	100	80	120	3	4	45	M6
FT115	115	95	140	3	4	45	M8
FT115	115	95	140	3	4	45	M8
FT115	115	95	140	3	4	45	M8
FT130	130	110	160	3.5	4	45	M8
FT130	130	110	160	3.5	4	45	M8
FT130	130	110	160	3.5	4	45	M8
FT130	130	110	160	3.5	4	45	M8
FT130	130	110	160	3.5	4	45	M8
FT165	165	130	200	3.5	4	45	M10
FT165	165	130	200	3.5	4	45	M10
FT165	165	130	200	3.5	4	45	M10
FT165	165	130	200	3.5	4	45	M10

IP55 CAST IRON MOTORS