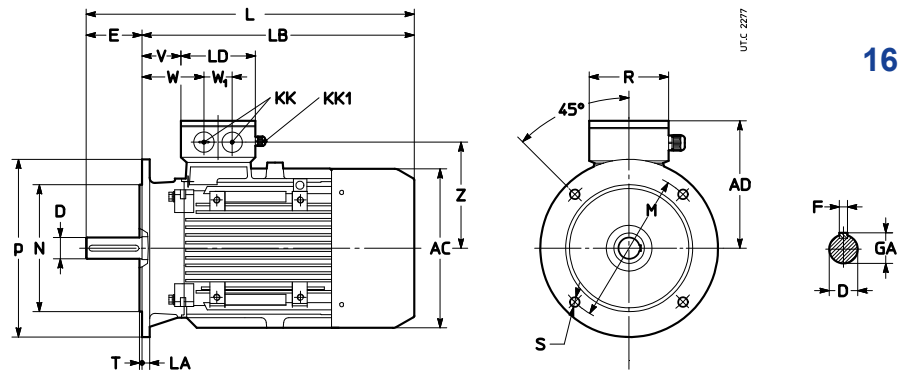


## 7.6

### Motor dimensions

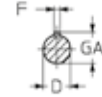
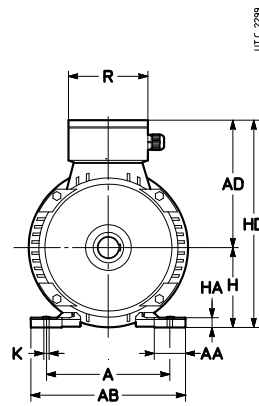
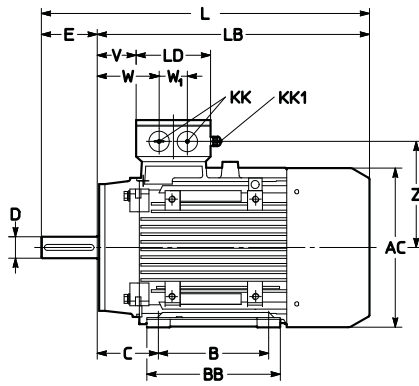
Mounting position  
IM B5, IM B5R



Motor size	AC	AD	L	LB	LD	KK	KK1	R	V	W	W <sub>1</sub>	Z	Shaft end				Flange								
													D	E	F	GA	M	N	P	LA	S	T			
	∅												∅	h9	∅	∅	∅	∅	∅	∅	∅				
160 B5R B5	315	240	620	540	150	2×M40	1×M16	160	92	140	56	210	38	k6	M12	80	10	41	265	230	j6	300	14	14	4
			650						82	130			42	k6	M16	110	12	45	300	250	h6	350	15	19	5
180 M 180 L	360	278	660	550	158	2×M50		169	81	130	60	225	48	k6	M16		14	51,5							
B5			700	590																					
200 B5R B5	400	310	795	685	198			218	123	185	72	250	55	m6	M20		16	59	350	300	h6	400	17		
			B5	760					650																
225 S 225 M	450	330	795	655					91	153		272	60	m6	M20	140	18	64	400	350	h6	450	20	19 <sup>4)</sup>	
B5			820	680																					
250 B5R B5	485	375	876	736	228			228	93	162	90	295	65	m6	M20		69	500	450	h6	550	16	22		
			B5	1013					873																
280S 280M	550	405	1013	873		2×M63			101	170		324	75	m6	M20		20	79,5							
B5			1064	928																					
315S	620	530	1185	1015	303			303	106	197	120	433	80	m6	M20	170	22	85	600	550	h6	660		24 <sup>4)</sup>	6

1) Tapped butt-end hole.  
4) 22° 30' rotation of 8 holes compared to scheme.

Mounting position  
IM B3



160 ... 315

Motor size												Shaft end				Feet											
	AC	AD	L	LB	LD	KK	KK1	R	V	W	W <sub>1</sub>	Z	D	1) E	F	GA	A	AB	B	C	BB	AA	K	HA	H <sup>2)</sup>	HD	
	∅												∅		h9												
<b>160 M B3</b>	315	240	650	540	150	4×M40	1×M16	160	82	140	56	210	42 k6	M16	110	12	45	254	296	254	108	296	55	14	20	160	418
<b>160L B3</b>																											
<b>180 M B3</b>	360	278	660	550	158	2×M50		169	81		60	225	48 k6	M16		14	51,5	279	350	241	121	315	70	15	22	180	458
<b>180 L B3</b>			700	590															279								
<b>200 B3</b>	400	310	760	650	198			218	88	150	72	250	55 m6	M20		16	59	318	390	305	133	370	70	19	25	200	510
<b>225 S B3</b>	450	330	795	655					91	153		272	60 m6	M20	140	18	64	356	435	286	149		75		28	225	555
<b>225 M B3</b>			820	680															311		395						
<b>250 B3</b>	485	375	876	736	228			228	93	162	90	295	65 m6	M20			69	406	485	349	168	445	80	24	30	250	625
<b>280 S B3</b>	550	405	1013	873		2×M63			101	170		324	75 m6	M20		20	79,5	457	545	368	190	490	85		35	280	685
<b>280 M B3</b>			1064	928															419		540						
<b>315 S B3</b>	620	530	1185	1015	303			303	106	197	120	433	80 m6	M20	170	22	85	508	630	406	216	570	120	28	45	315	845

1) Tapped butt-end hole.

2) Tolerance: up to size 250  $\pm 0.5$  mm, for sizes 280 and 315  $\pm 1$  mm.