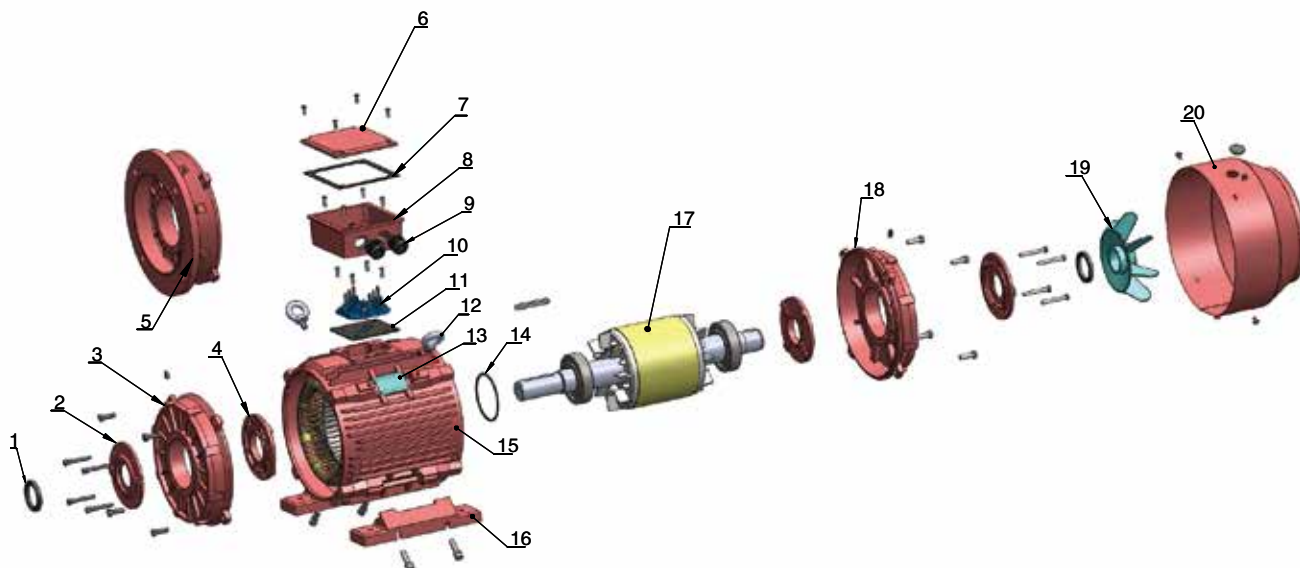
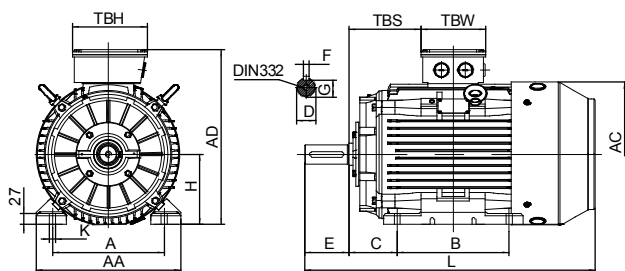


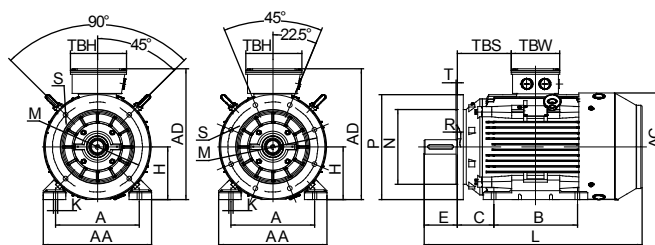
Motor Spare Part List "Exploded Drawing"



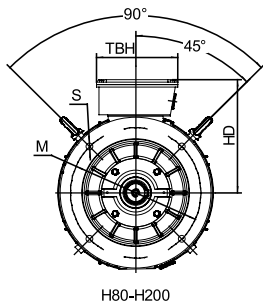
- | | | | |
|--------------------------|--------------------|----------------------|-------------------|
| 1. Oil seal | 6. TB cover | 11. TB bottom gasket | 16. Foot |
| 2. Outer bearing cap D.E | 7. TB upper gasket | 12. Eye bolt | 17. Rotor |
| 3. DE endshield | 8. TB base | 13. Nameplate | 18. NDE endshield |
| 4. Inner bearing cap D.E | 9. Cable gland | 14. Wave washer | 19. Cooling fan |
| 5. B5 flange | 10. Terminal board | 15. Frame | 20. Fan cover |



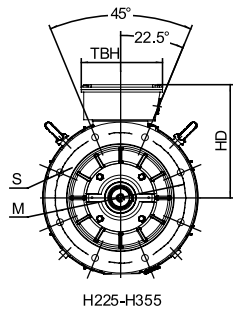
IM B3



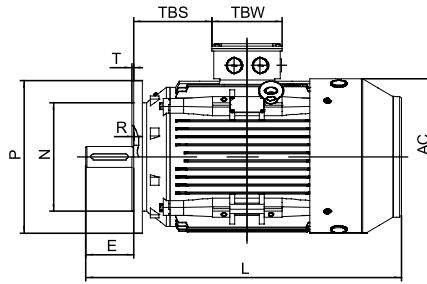
IM B35



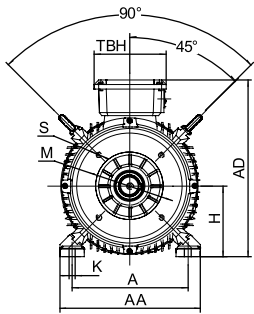
H80-H200



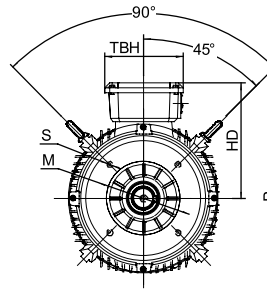
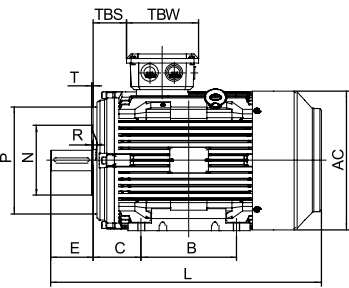
H225-H355



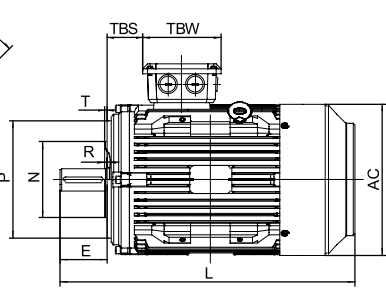
IM B5



IM B34



IM B14



Overall & Installation Dimensions

Frame	Foot Mounting				Shaft					General								
	H	A	B	C	D	E	F	G	K	AA	AD	HD	AC	L	TBS	TBW	TBH	
80	80	125	100	50	φ 19	40	6	15.5	φ 9	154	214	134	φ 158	290	43	114	114	
90S/L	90	140	100/125	56	φ 24	50	8	20	φ 10	178	231	141	φ 176	320/345	49/61.5	114	114	
100L	100	160	140	63	φ 28	60	8	24	φ 12	203	251	151	φ 199	385	76	114	114	
112M	112	190	140	70	φ 28	60	8	24	φ 12	231	292	180	φ 220	405	73	134	134	
132S/M	132	216	140/178	89	φ 38	80	10	33	φ 12	263	332	200	φ 259	467/505	61.5	134	134	
160M/L	160	254	210/254	108	φ 42	110	12	37	φ 15	316	404	244	φ 313	605/650	91	162	187	
180M/L	180	279	241/279	121	φ 48	110	14	42.5	φ 15	354	445	265	φ 360	687/725	160/180	162	187	
200L	200	318	305	133	φ 55	110	16	49	φ 19	393	500	300	φ 399	768.5	192	186	233	
225S	4,6,8	225	356	286	149	φ 60	140	18	53	φ 19	440	558	333	φ 459	810	199	186	233
	2	225	356	311	149	φ 55	110	16	49	φ 19	440	558	333	φ 459	805	211.5	186	233
225M	4,6,8	225	356	311	149	φ 60	140	18	53	φ 19	440	558	333	φ 459	835	211.5	186	233
	2	250	406	349	168	φ 60	140	18	53	φ 24	484	616	366	φ 506	915	233	218	260
250M	4,6,8	250	406	349	168	φ 65	140	18	58	φ 24	484	616	366	φ 506	915	233	218	260
	2	280	457	368/419	190	φ 65	140	18	58	φ 24	560	675	395	φ 559	984/1035	265/277	218/245	260/280
280S/M	4,6,8	280	457	368/419	190	φ 75	140	20	67.5	φ 24	560	675	395	φ 559	984/1035	265/277	218/245	260/280
	2	315	508	406	216	φ 65	140	18	58	φ 28	628	825	510	φ 680	1205	200	290	350
315S	4,6,8	315	508	406	216	φ 80	170	22	71	φ 28	628	825	510	φ 680	1235	200	290	350
	2	315	508	457/508	216	φ 65	140	18	58	φ 28	628	825	510	φ 680	1355	200	290	350
315M/L	4,6,8	315	508	457/508	216	φ 80	170	22	71	φ 28	628	825	510	φ 680	1385	200	290	350
	2	355	610	560/630	254	φ 75	140	20	67.5	φ 28	740	1010	655	φ 820	1495	140	330	380
355M/L	4,6,8	355	610	560/630	254	φ 95	170	25	86	φ 28	740	1010	655	φ 820	1525	140	330	380
	4,6,8	355	610	560/630	254	φ 100	210	28	90	φ 28	740	1010	655	φ 820	1565	140	330	380

Frame	Bearings		Cable Gland	B5						B14					
	DE	NDE		N	M	P	S	T	R	N	M	P	S	T	R
80	6204		1-M20×1.5	φ 130	φ 165	φ 200	4×φ 12	3.5	0	φ 80	φ 100	φ 120	M6	3	0
90S/L	6205		1-M20×1.5	φ 130	φ 165	φ 200	4×φ 12	3.5	0	95	115	140	M8	3	0
100L	6206		1-M20×1.5	φ 180	φ 215	φ 250	4×φ 15	4	0	110	130	160	M8	3.5	0
112M	6306		2-M25×1.5	φ 180	φ 215	φ 250	4×φ 15	4	0	110	130	160	M8	3.5	0
132S/M	6308		2-M25×1.5	φ 230	φ 265	φ 300	4×φ 15	4	0	130	165	200	M10	3.5	0
160M/L	6309		2-M32×1.5	φ 250	φ 300	φ 350	4×φ 19	5	0	180	215	250	M12	5	0
180M/L	6311		2-M32×1.5	φ 250	φ 300	φ 350	4×φ 19	5	0						
200L	6312		2-M40×1.5	φ 300	φ 350	φ 400	4×φ 19	5	0						
225S/M	6313		2-M50×1.5	φ 350	φ 400	φ 450	8×φ 19	5	0						
250M	6314		2-M50×1.5	φ 450	φ 500	φ 550	8×φ 19	5	0						
280S/M	6316		2-M50×1.5	φ 450	φ 500	φ 550	8×φ 19	5	0						
315S/M/L	2	6317		2-M63×1.5	φ 550	φ 600	φ 660	8×φ 24	6	0					
	4,6,8	NU319	6319												
355M/L	2	6319		2-M63×1.5	φ 680	φ 740	φ 800	8×φ 24	6	0					
	4,6,8	NU322	6322												

IEC MOTOR
FIRE PUMP MOTOR
GOST MOTOR
NEMA MOTOR
DC MOTOR
EC MOTOR